

HabiTEQ™

ED.02

Home & Building Automation



- Energy efficiency
- Outstanding comfort
- Enhanced safety



GE imagination at work

HabiTEQ™ - Home & Building Automation

	Introduction
2	Advantages
8	Home solution
10	Building solution
12	System architecture
14	System topologies
	Automation solutions
16	Pre-wired distribution boards
20	Range of enclosures
	Automation components
24	Controllers
26	Dimmer modules
28	Input modules
30	Communication interfaces
	Order codes
31	System controllers
32	Universal load actuators
33	Input modules
34	Dimmers
35	Communication interfaces
36	System visualization
37	Smart switches
42	Sensors
48	Range of modular devices
49	Numerical index

HabiTEQ™

Development of innovative technology impacts our daily lives offering a wealth of new possibilities which includes our very own home or working space.

This is particularly true for the electrical installation – the heart of every building. This area holds great potential for designing properties with greater flexibility, energy saving and outstanding comfort without compromising lifestyle.

The **HabiTEQ™** automation solutions and components are tailored for your building - offering a platform of opportunities to achieve a versatile system satisfying the most demanding customers needs.

HabiTEQ™ components

Offer a single and simple integrated system instead of separate control solutions...

In comparison with classic electrical installations, the HabiTEQ™ intelligent building control system offers noticeable advantages.

All the different functional subsystems within your living space are seamlessly integrated via a 2-wire BUS to a single communicating system, controlled by a powerful central controller. This enables the optimal, energy efficient interaction of the subsystems, which is almost impossible with conventional technology.

The system allows a large number of interactive functions to be realised, including:

- | Lighting control | Heating/ventilation control | Climate control | Shutter control | Safety monitoring
- | Energy management | Central automation |



HabiTEQ™ solutions

Intelligent “plug and play” distribution boards, designed for easy installation and time saving.

GE offers two standard pre-equipped and pre-wired distribution boards – one for apartments (Fix-o-Rail 150) and one for houses (QuiXtra 630). These standard solutions are flexible and adaptable. The installation can be extended with components in- and outside the panel. Inside there is a significant reserve for DIN-rail modules. Outside the system can be extended with HabiTEQ wireless modules. The communication between the two media (wired and wireless) is bi-directional.

Customer benefits

- Significant time saving
- Available on stock
- 100% tested solution
- Easy extension
- Sharp prices



HabiTEQ™ Flexible solution for electrical installation

Seamlessly integrating safety, security, lighting, climate, automation of mechanical loads such as shutters and blinds, and many more!
HabiTEQ™ provides comfort, control and convenience through multiple stylish user interfaces (touch screen, switches, etc.)



comfort



convenience

or smart & simple ons!

Easy to install and customize. Using a PC through a choice of serial or ethernet link adds tangible value to installers of commercial buildings and home owners whatever the property: apartments, family homes, villas, etc.

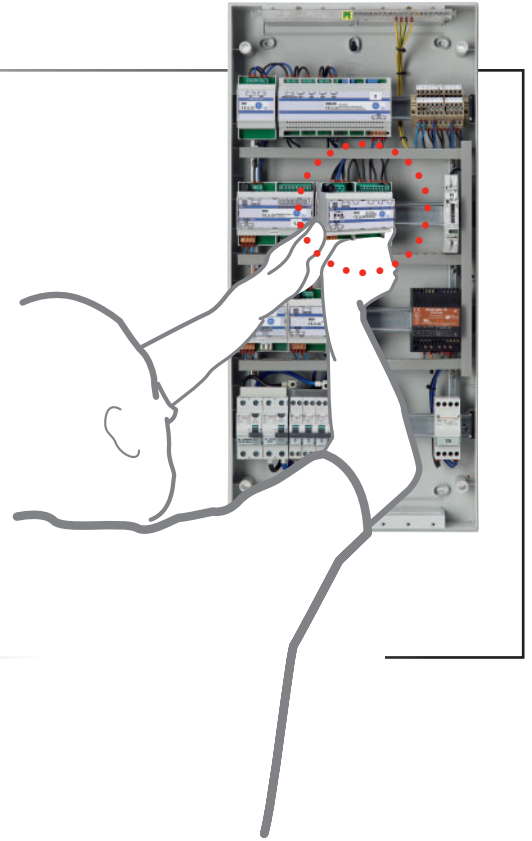
security



Easy to install

Modular building blocks, easily scalable!

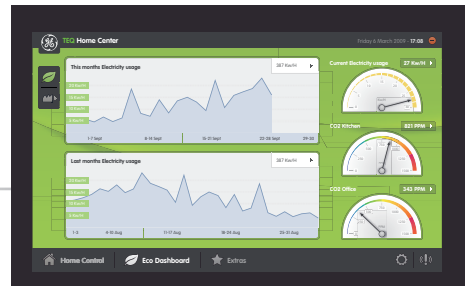
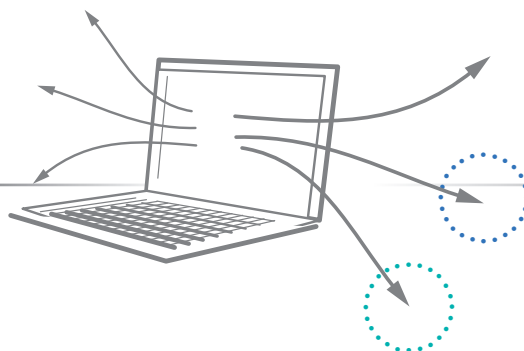
- Fast 2-wire BUS system with no polarity, no restrictions on topology
- Quick and easy system configuration
- Fast and simple installation



Value for money

Track and control energy usage with a simple pulse meter

- Flexible functionality – easily enhance and adapt with limited or no additional hardware
- Up to 50% cost saving on system installation & setup⁽¹⁾



(1) Compared to other popular distributed systems.

Flexibility

Visualize and control through the internet via a PC or mobile phone with no additional hardware⁽¹⁾

- Integrate third party infrared (IR) remote control
- Make any switch intelligent
- Easy to configure
- User friendly



Integration with larger systems through the ethernet⁽²⁾ for buildings



Remote access
Multiple clients



Redundancy
Manual override on field modules



Open Standards

(1) Controller with ethernet port.
(2) Using the event handler protocol, supplied on request.

Home solution

Advantages

● **Carbon monoxide sensor** - FGT312CO
- Opens ventilation or shutters

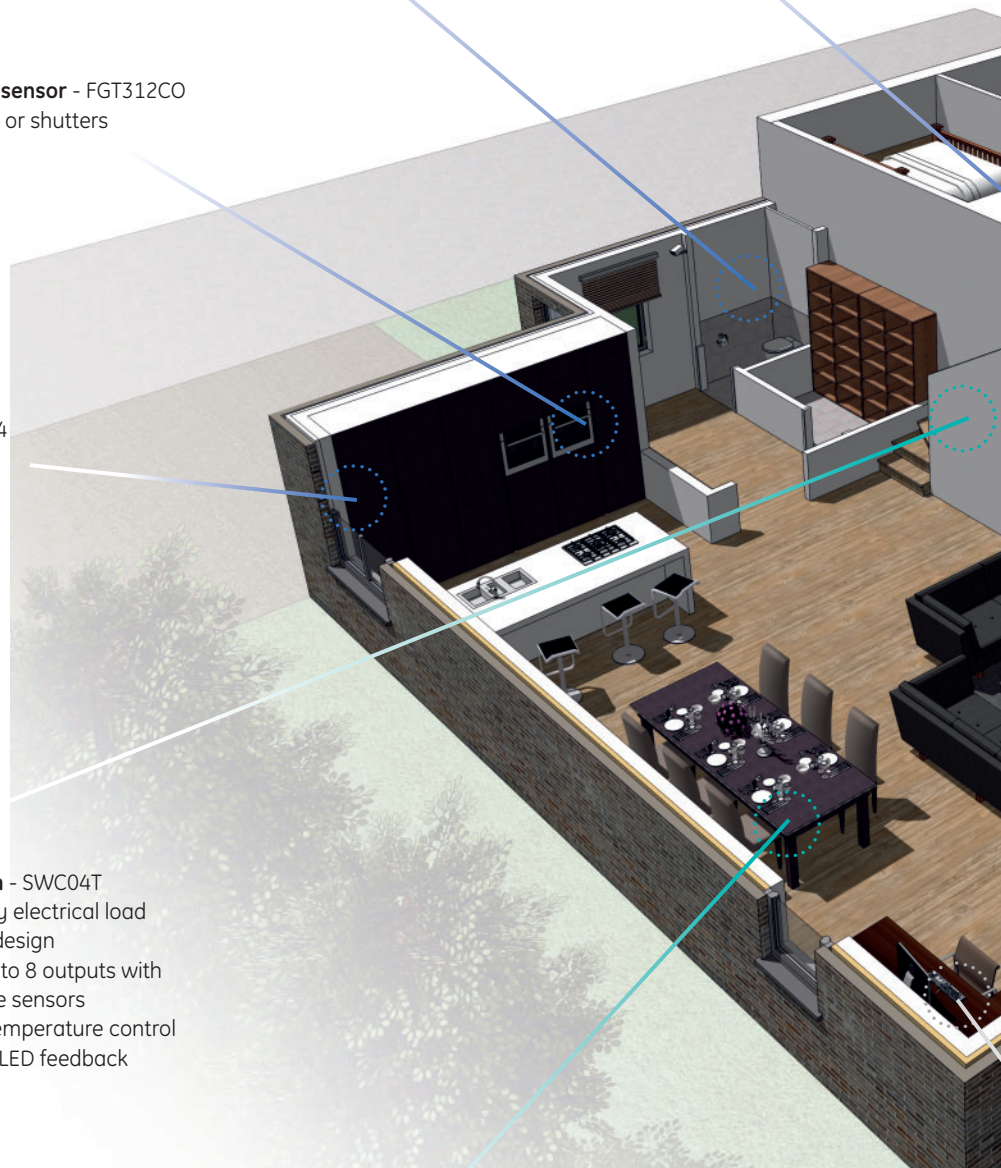
● **Gas sensor** - FGELPG24
- Opens the shutters

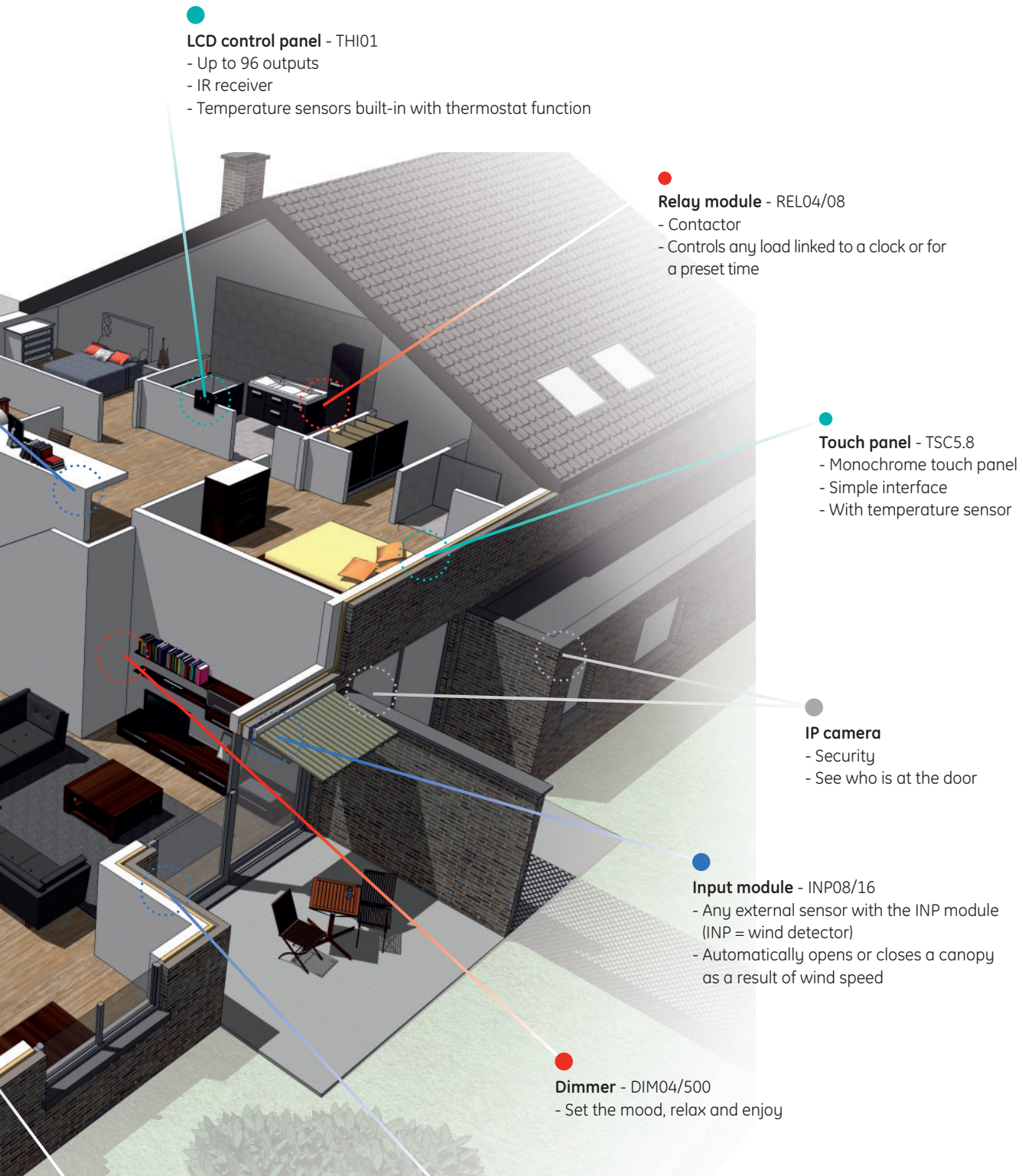
● **Smart switch** - SWC04T
- Controls any electrical load
- With Niko® design
- Controls up to 8 outputs with temperature sensors
- Multizone temperature control
- Multicolour LED feedback

● **Smoke sensor** - DP721R
Smoke sensor pre-warning

● **Motion sensor** - PIR
EV100 (indoor) DI502 (outdoor)
- Sensor with high immunity to false motion
- For automatic lighting and heating

● **Interface module** - SMS01
- Any mobile phone
- Controls any electrical load with text





LCD control panel - THIO1

- Up to 96 outputs
- IR receiver
- Temperature sensors built-in with thermostat function

Relay module - REL04/08

- Contactor
- Controls any load linked to a clock or for a preset time

Touch panel - TSC5.8

- Monochrome touch panel
- Simple interface
- With temperature sensor

IP camera

- Security
- See who is at the door

Input module - INP08/16

- Any external sensor with the INP module (INP = wind detector)
- Automatically opens or closes a canopy as a result of wind speed

Dimmer - DIM04/500

- Set the mood, relax and enjoy

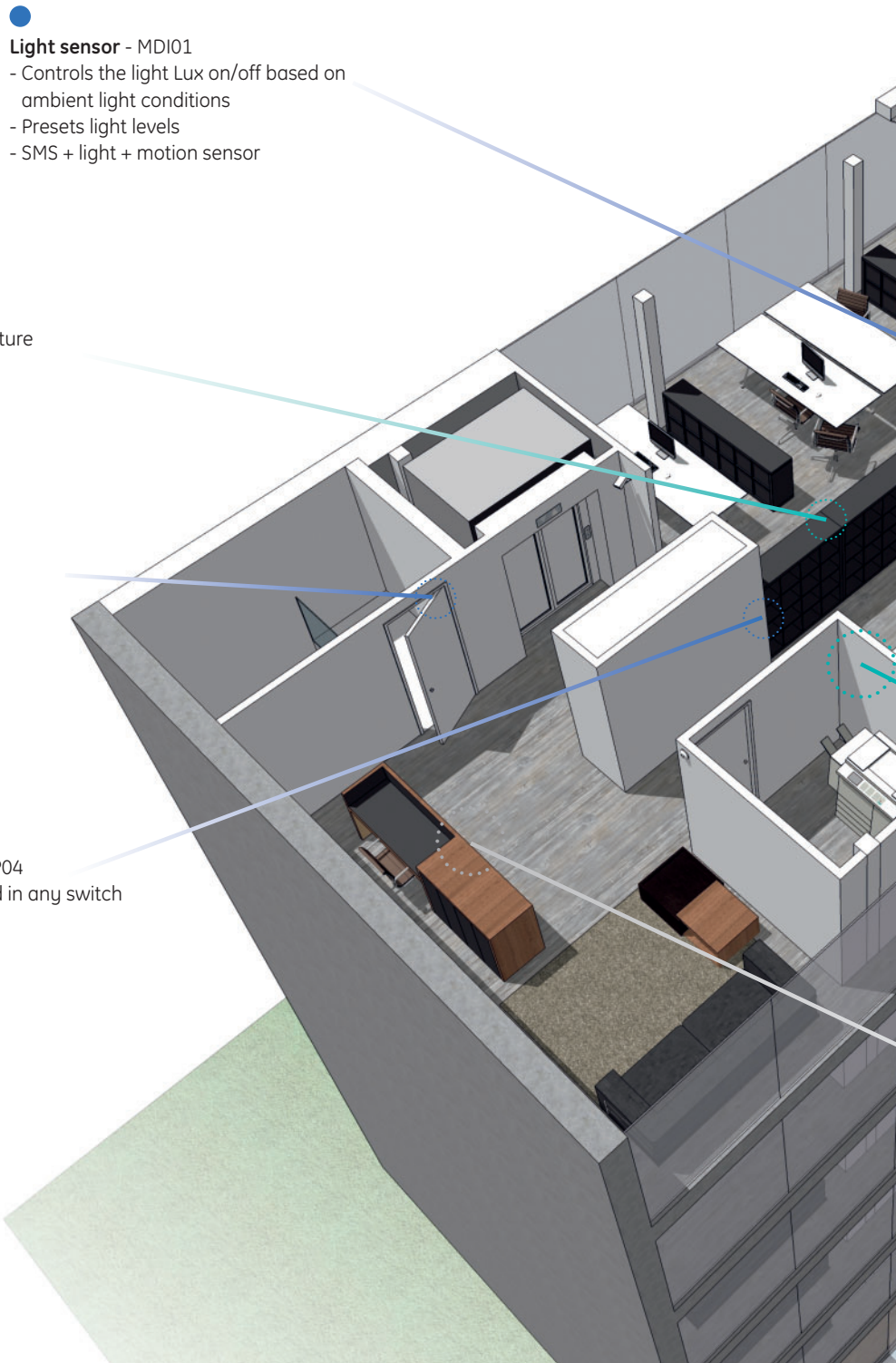
Touch panel-PC - TCPC/NAV10.2

- Central home control with energy visualization

Input module - INP04 / INP02

- Can be integrated in any switch

Building solution

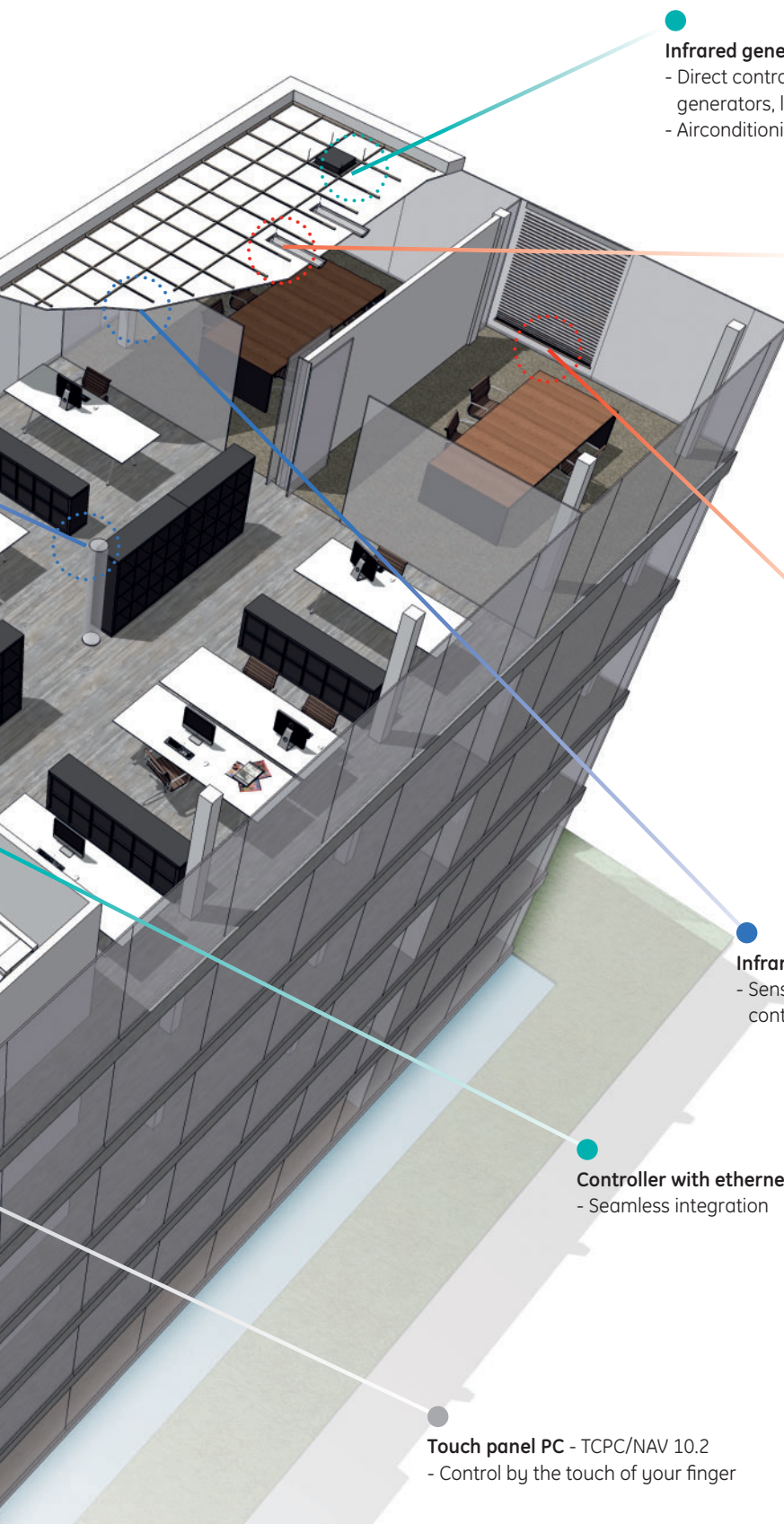


● **Light sensor - MDI01**
- Controls the light Lux on/off based on ambient light conditions
- Presets light levels
- SMS + light + motion sensor

● **Room controller - THI01**
- To control zone temperature

● **Door contact - DC101**
- Energy saving; heating shuts down if the window opens

● **Input module - INP04**
- Can be integrated in any switch



Infrared generator - IRG04

- Direct control of airconditioning with infrared generators, linked to presence of open windows
- Airconditioning goes to standby if a window opens

Dimmer - ANR04

- Dimming of fluorescent lamps
- Reduces light levels to the perfect amount of light in combination with the light sensor

Shutter up / down - ROL02

- Shutters / blinds... positioned perfectly
- Stand alone or linked to a smart sensor light

Infrared sensor - EV669 / DD669

- Senses 360° motion and controls lights and heating

Controller with ethernet - CTD

- Seamless integration

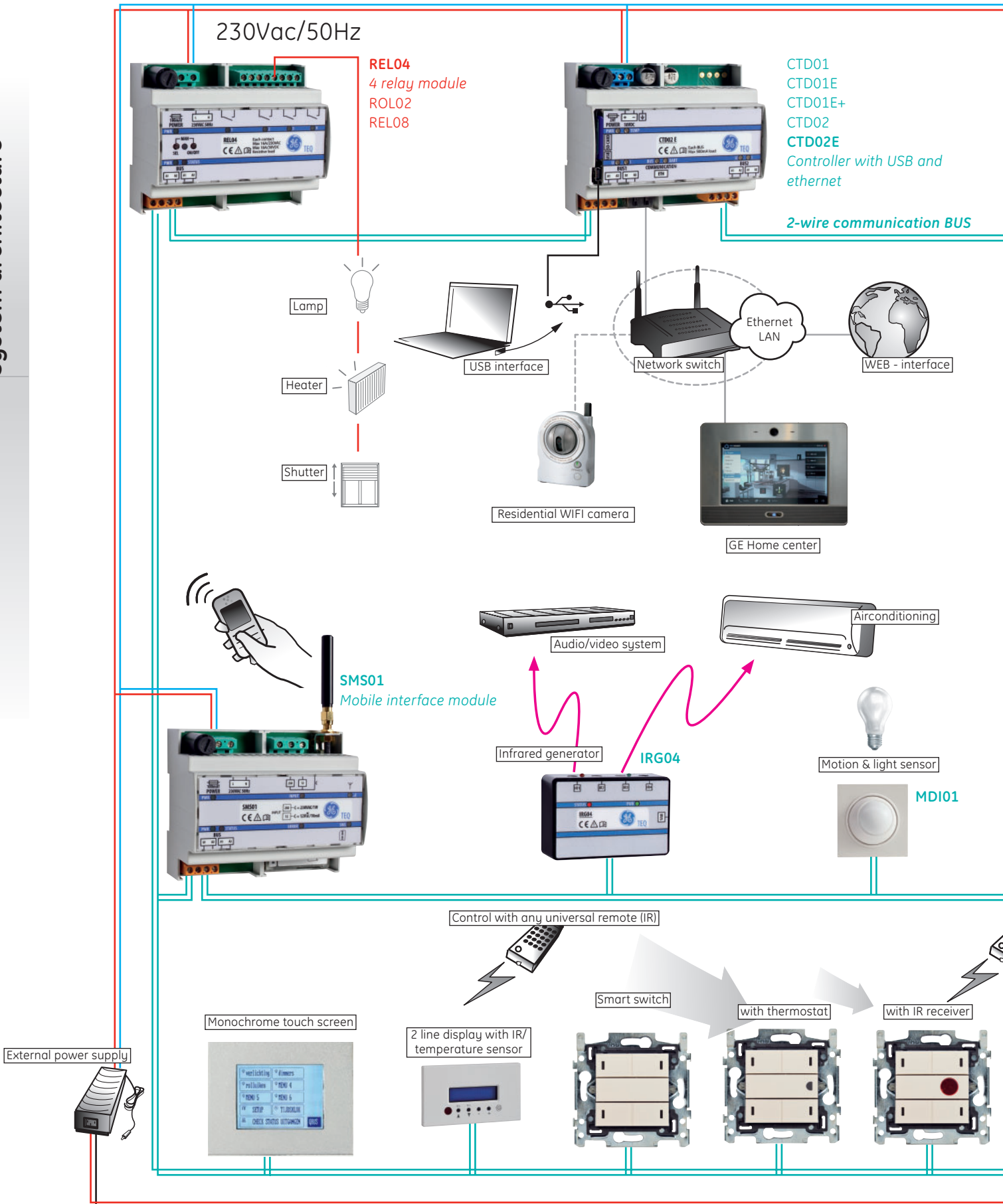
Touch panel PC - TCPC/NAV 10.2

- Control by the touch of your finger

Relays / Load control

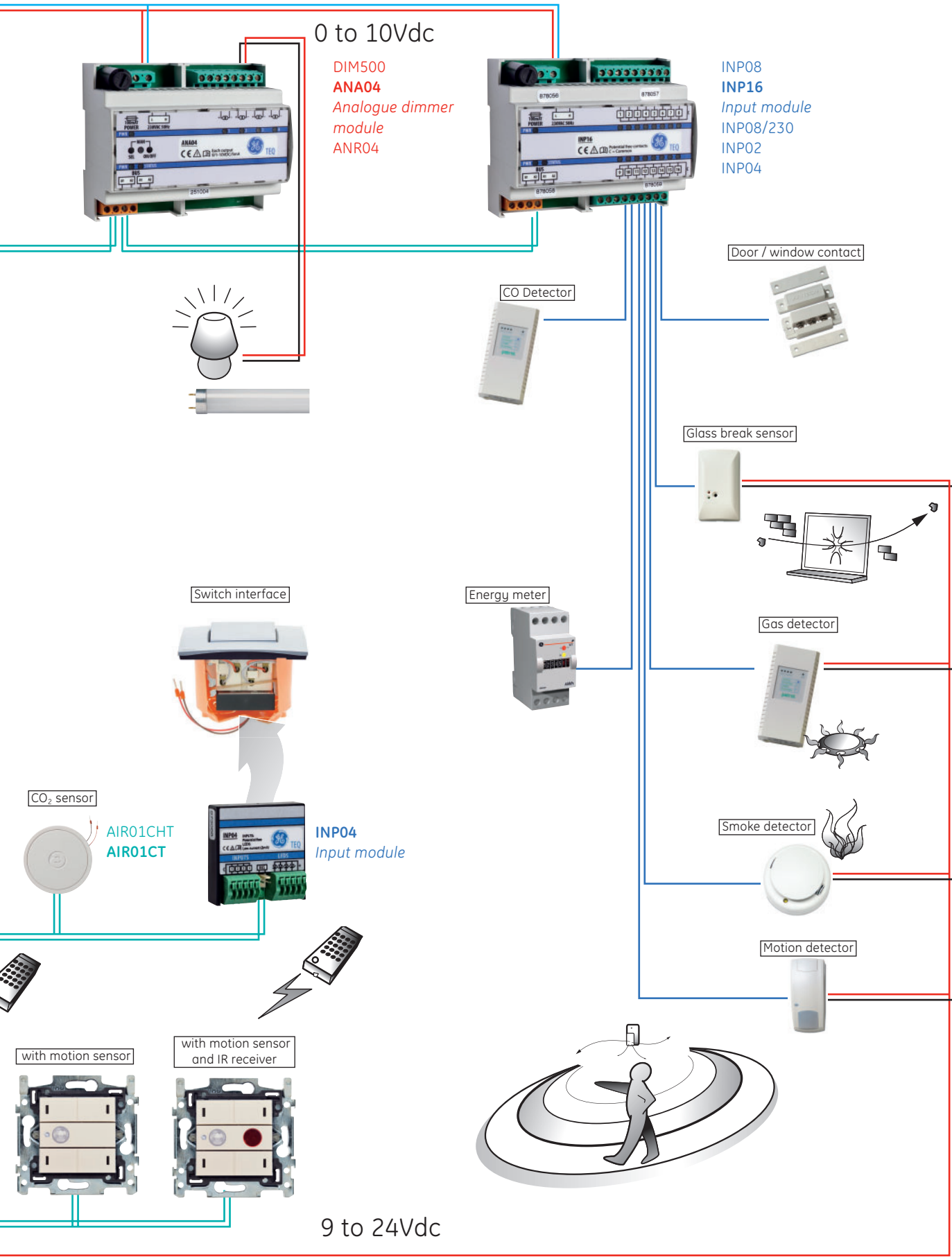
Controllers

System architecture



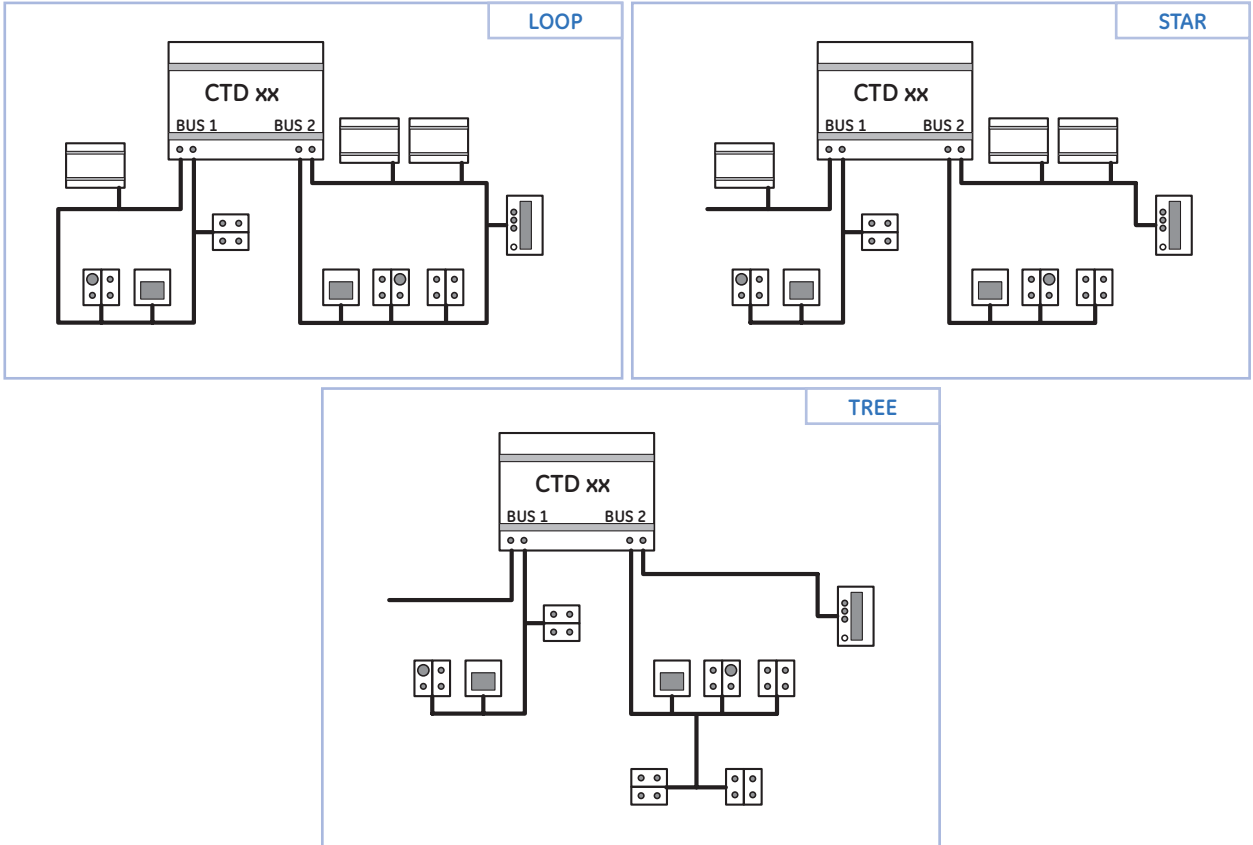
Lighting control

Input modules



System topologies

Flexible BUS topology... star, loop, tree or any combination with no polarity... enables quick and easy installation

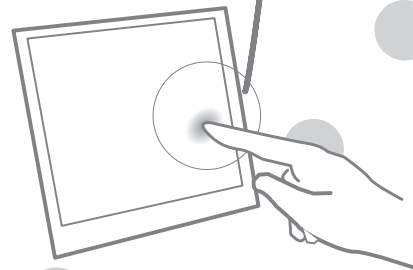
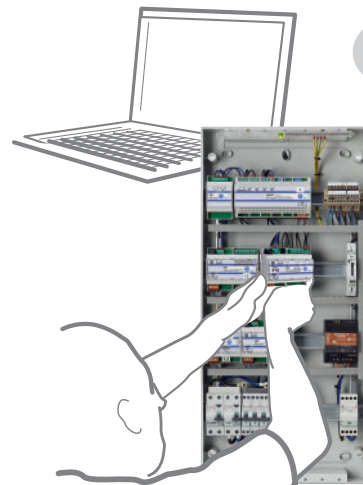
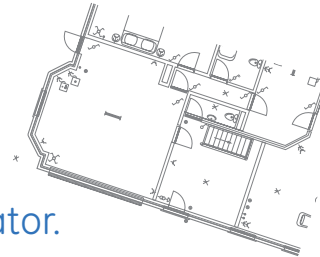


System overview

- 2-wire bi-directional BUS communication.
- BUS supplies power to the I/O module and has no polarity
- I/O reaction speed: 400 outlets = 0.3 sec
- Simultaneous communication
- Current based BUS principle = high resistance against external influences
- Cable: shielded twisted pair section 2 x 1.0 mm²
Distance max. 200m (open), max. 400 m (closed)

Your home or building automation solution... is just six steps away

- 1** Enter installation details on floor plan.
- 2** Transfer installation details to the configurator.
- 3** Output of parts list and HabiTEQ™ distribution board.
- 4** Place the order for your HabiTEQ™ distribution board & other accessories (switches, touchscreen etc..)
- 5** Install & connect
- 6** Configure & startup

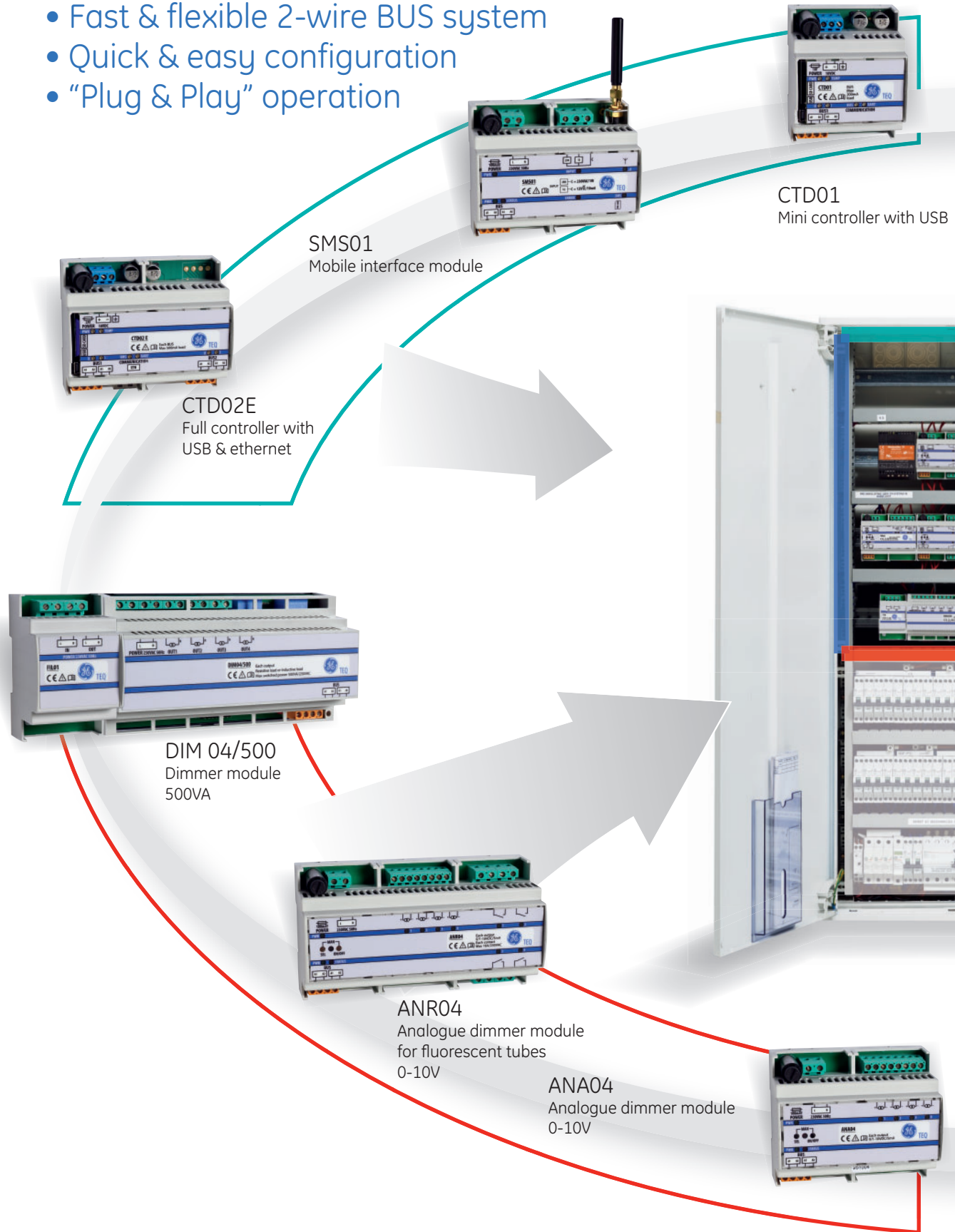


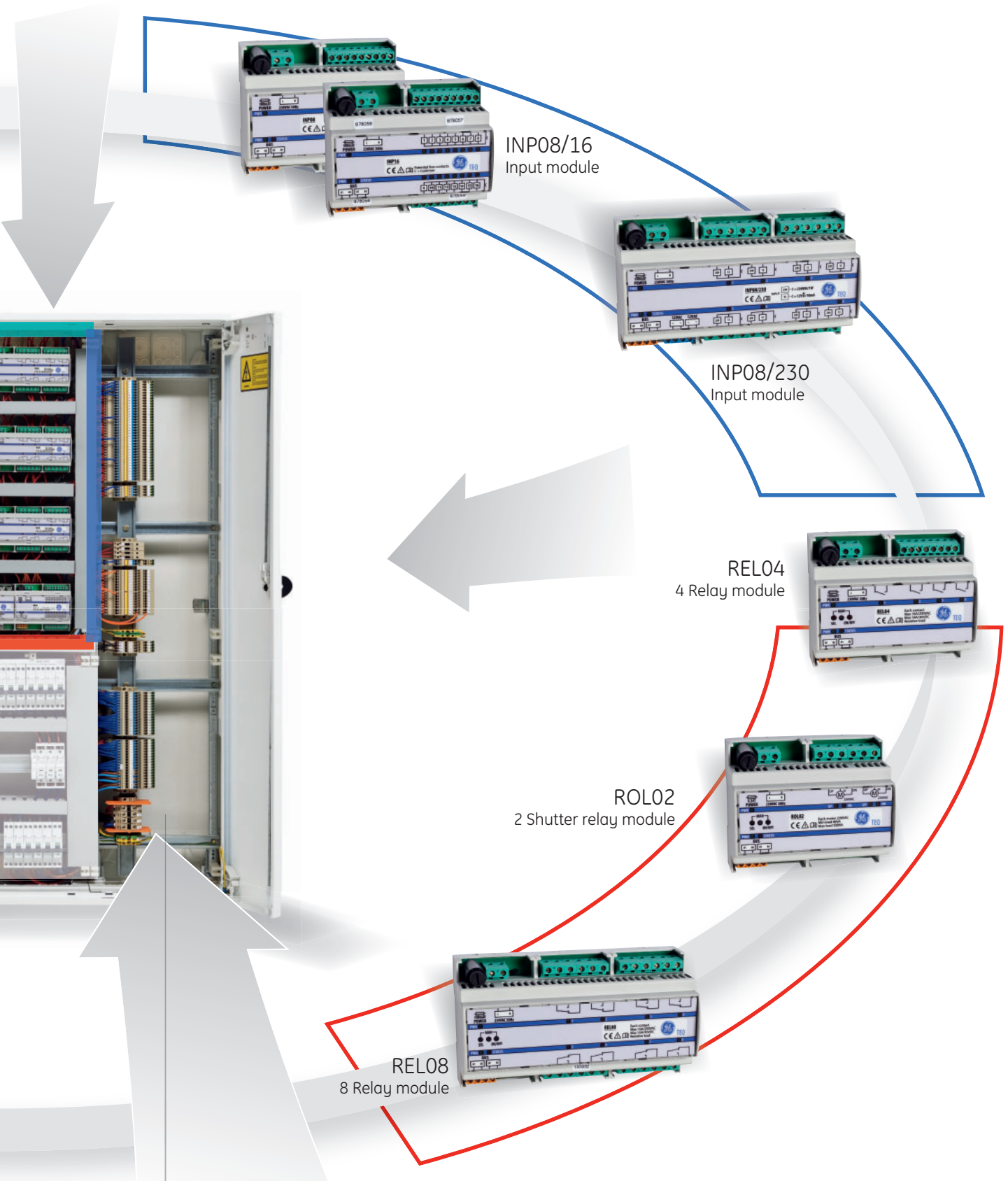
Simple installation – Can be done by your local electrician

- Quick & easy system setup through PC
- “HabiTEQ™ System Manager” free software. For online support go to the homepage of our website and click on Portfolio Residential.
www.ge.com/ex/industrialsolutions

Pre-wired distribution board Automation components

- Fast & flexible 2-wire BUS system
- Quick & easy configuration
- "Plug & Play" operation





INP08/16
Input module

INP08/230
Input module

RELO4
4 Relay module

ROL02
2 Shutter relay module

RELO8
8 Relay module

Separate cable compartment (enclosure types C-D-E-F)
Enclosure shown is type C7 (see page 22)



Pre-wired distribution board Protection devices

- Quick & easy installation
- Circuit and people protection



RCD's for people protection



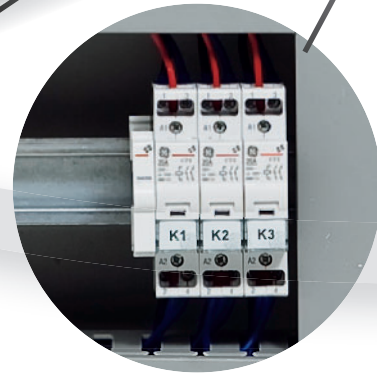
MCB's for line protection



Surge protection



Overtoltage protection



Contactors for controlled socket-outlets





Controlled outputs

M Motor

R Relay

D Dimmer

Potential free and 230Vac binary inputs
Connections from push-buttons, magnetic contacts and external detectors to input module.

BUS connection

Screwless terminals for quick connection

Conventional cabled and controlled socket-outlets

Customized distribution boards

One enclosure for each requirement

Type A
Fix-o-Rail 150
Surface Mounting



Rows	Type A	Code	H x W x D	Mod/Row	Total Mod
4	FOR 150	A4	750x355x150	18	72

- Customized:
 - equipped with modular devices
 - external wiring direct onto input modules
 - cables from socket circuits directly into MCB's
 - wiring of controlled outputs on terminals
 - single phase 40A incomer

Type B-F
Fix-o-Rail 144 F
Flush Mounting



Picture shown B6F

Rows	Type B-F	Code	H x W x D	Mod/Row	Total Mod
4	FOR 144F	B4F	800x740x(35)140	24	96
5	FOR 144F	B5F	950x740x(35)140	24	120
6	FOR 144F	B6F	1100x740x(35)140	24	144

- Customized:
 - equipped with modular devices
 - external wiring direct onto input modules
 - cables from socket circuits directly into MCB's
 - wiring of controlled outputs on terminals

Type B-S
Fix-o-Rail 144 S
 Surface Mounting



Picture shown B6S

Rows	Type B-S	Code	H x W x D	Mod/Row	Total Mod
4	FOR 144S	B4S	800x740x140	24	96
5	FOR 144S	B5S	950x740x140	24	120
6	FOR 144S	B6S	1100x740x140	24	144

- Customized:
 - equipped with modular devices
 - external wiring direct onto input modules
 - cables from socket circuits directly into MCB's
 - wiring of controlled outputs on terminals

Type B
VP-SYSTEM MV/MS
 MW= Wall Mounting
 MS= Floor Standing



Picture shown B8

Rows	Type B	Code	H x W x D	Mod/Row	Total Mod
4	VP MW	B4	650x550x210	24	96
5	VP MW	B5	800x550x210	24	120
6	VP MW	B6	950x550x210	24	144
7	VP MW	B7	1100x550x210	22	154
8	VP MW	B8	1250x550x210	22	176
9	VP MW	B9	1400x550x210	22	198
12	VP MS	BS12	1980x550x210	20	240

- Customized:
 - equipped with modular devices
 - external wiring direct onto input modules
 - cables from socket circuits into terminals
 - wiring of controlled outputs on terminals

Customized distribution boards

One enclosure for each requirement

Type C
VP-SYSTEM MW/MS
 MW= Wall Mounting
 MS= Floor Standing



Picture shown C7

Type D
VP-SYSTEM MW/MS



Picture shown D9

Rows	Type C	Code	H x W x D	Mod/ Row	Total Mod
5	VP MW	C5	800x800x210	22	110
6	VP MW	C6	950x800x210	22	132
7	VP MW	C7	1100x800x210	22	154
8	VP MW	C8	1250x800x210	22	176
9	VP MW	C9	1400x800x210	22	198
12	VP MS	CS12	1980x800x210	22	264

Rows	Type D	Code	H x W x D	Mod/ Row	Total Mod
5	VP MW	D5	800x1050x210	34	170
6	VP MW	D6	950x1050x210	34	204
7	VP MW	D7	1100x1050x210	34	238
8	VP MW	D8	1250x1050x210	34	272
9	VP MW	D9	1400x1050x210	34	306
12	VP MS	DS12	1980x1050x210	34	408

- Customized:
 - equipped with modular devices
 - separate cable compartment (in- and outgoing cables)
 - cables from socket circuits onto terminals
 - wiring of controlled outputs into terminals
 - wiring of inputs on terminals

- Customized:
 - equipped with modular devices
 - separate cable compartment (in- and outgoing cables)
 - cables from socket circuits onto terminals
 - wiring of controlled outputs into terminals
 - wiring of inputs on terminals

Type E
VP-SYSTEM MW



Picture shown E8

Type F
QuiXtra™ 630



Picture shown FS12

Rows	Type E	Code	H x W x D	Mod/Row	Total Mod
5	VP MW	E5	800x1300x210	38	190
6	VP MW	E6	950x1300x210	38	228
7	VP MW	E7	1250x1300x210	38	266
8	VP MW	E8	1400x1300x210	38	304
9	VP MW	E9	1980x1300x210	38	342

- Customized:
 - equipped with modular devices
 - separate cable compartment (in- and outgoing cables)
 - cables from socket circuits onto terminals
 - wiring of controlled outputs into terminals
 - wiring of inputs on terminals

Rows	Type F	Code	H x W x D	Mod/Row	Total Mod
5	QuiXtra 630	F5	900x1240x250	36	180
6	QuiXtra 630	F6	1050x1240x250	36	216
7	QuiXtra 630	F7	1200x1240x250	36	252
8	QuiXtra 630	F8	1350x1240x250	36	288
9	QuiXtra 630	FS9	1600x1240x250	36	324
10	QuiXtra 630	FS10	1750x1240x250	36	360
12	QuiXtra 630	FS12	2050x1240x250	36	432

- Customized:
 - equipped modular devices
 - separate cable compartment (in- and outgoing cables)
 - main compartment with transparent door
 - cables from socket circuits onto terminals
 - wiring of controlled outputs into terminals
 - wiring of inputs on terminals
- Optional: main compartment with plain door

